

# THE SCOOP

FORTNIGHTLY NEWSLETTER



Farewell

- 1 -

*namaste*

2021 Family  
Christmas Party

- 2 -

The time has come for us to say farewell to Marcello. It is unfortunate to be losing such a fantastic educator and we'd like to thank him for his time and dedication.

We wish Marcello all the very best and lots of luck as he moves on to his next adventure.

Parent/Educator  
Meetings

- 3 -

Closure Dates &  
Subicare Digital Media

- 4 -

With consistency of care in mind, please rest assured that we will be supporting the Rainbow Room children during this transition. Along with the current rainbow team, you may see some other familiar casual faces in the room during the educator recruitment process. These changes are being put in place so that we can continue to provide your child with the best possible quality care and support as we see out the remainder of the year. We truly appreciate your patience and understanding.



# 2021 SUBICARE CHRISTMAS PARTY

The time for our annual family Christmas party is fast approaching! Please join us for an afternoon of fun and festivity!

*Friday the 10th of December*

*3.30pm - 5.30pm*

RSVP by Friday, December 3rd.

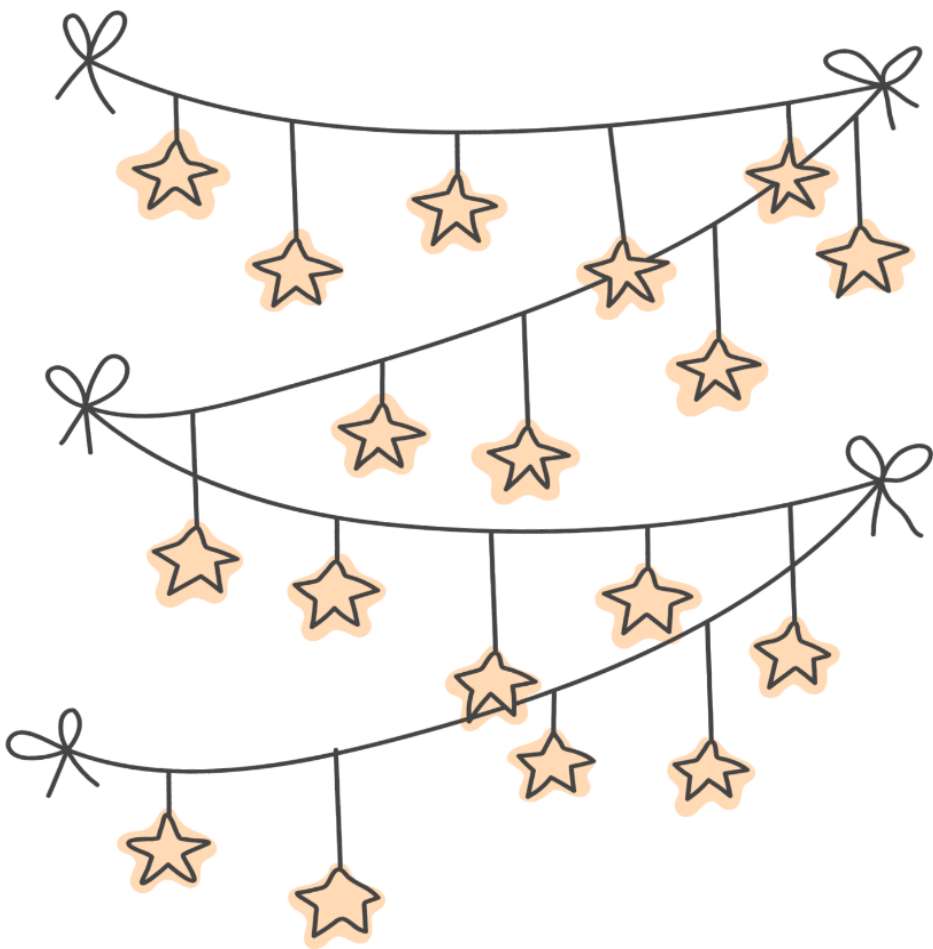
[director@subicare.com.au](mailto:director@subicare.com.au)



# **PARENT/EDUCATOR MEETINGS**

Thank you to all of the families who have joined us for our second round of parent educator meetings. The meetings for the Balloon Room and Sunshine Room have now finished and the Rainbow Room meetings are about to commence.

We hope you have found the process stress free, useful and informative and we welcome your feedback, to guide future practices.



## Closure Dates

The closure dates for the upcoming Christmas/New Year period are Thursday the 23rd of December to Friday the 8th of January. The last day of care for 2021 will be Wednesday the 22nd of December and the first day of care for 2022 will be Monday the 10th of January. Admin will be open for calls as of Friday the 7th of January.



[www.facebook.com/SubicareELC](https://www.facebook.com/SubicareELC)



[www.instagram.com/subicareelc](https://www.instagram.com/subicareelc)



[www.subicare.com.au](https://www.subicare.com.au)