

THE SCOOP

FORTNIGHTLY NEWSLETTER



From the Director

- 1 -

2023 Staffing

- 2 -

First Day 2023

- 3 -

Christmas Closure Dates &
Subicare Digital Media

- 4 -

From the Director

Dear parents,

I want to take a moment to thank you for entrusting your children to our care this year. As a parent myself, I understand the importance of finding a safe and nurturing environment for your children to learn and grow in.

Our team at our early learning centre has worked hard to create a supportive and stimulating environment for your children. We are committed to providing the best care possible and helping your children reach their full potential.

I also want to thank you for your continued support and cooperation throughout the year. Whether it was volunteering for our Parent Board, supporting our fundraising activities, being understanding during tough COVID-19 times, or simply offering words of encouragement, your involvement has been invaluable.

For those of you with children who will not be returning to our centre next year, we thank you for the time your children spent with us and wish them all the very best in their future endeavours.

Thank you again for choosing our early learning centre. We look forward to continuing to provide your children with the best possible care and education in the coming year. Wishing you all a very Merry Christmas and Happy New Year, enjoy your break.

Sincerely,
Lindsay

meet the team!

2023 STAFFING

Leadership

Lindsay (Director)



Sarah (Centre Manager)

Liz (Team Leader)

Deanna (Educational Leader)

Kitchen

Wendy (T, W & F)

Liam (M, & Th)

Balloon Room

Marcela, Kayler, Caitlin, Su (starting March) & Prashila

Sunshine Room

Leila, Caspar, Aya, Evelina, Liam (Tu, W & F) & Dani (M, Th & F)

Rainbow Room

Theresa, Rose, Alyssa & Ema

Theresa will be on leave until the 23rd of January,
Ruth will be covering in the Rainbow Room during this time.

Sustainability

Agnes (M & T)

Casual

Suchada

Arati

Tina

Erika

Float

Ruth

Cirko

Agnes

Admin

Wendy (M & Th)

Trish (T & F)





FIRST DAY 2023

As we look forward to welcoming you for 2023, there are a few key things to remember on the first day...

- Any forms to be returned to the admin team
- Your child's daily routine and all about me forms
- A clearly labelled hat, water bottle and pillowcase (if applicable)
- At least 2, clearly labelled and weather appropriate changes of clothes each day

Educators always make every effort to return belongings to the correct owner. In this environment it is very easy to misplace items, if they are not labelled. We ask that you please help by ensuring all of your child's belongings are clearly labelled.

Thank-you!

IMPORTANT INFORMATION

We have received notification from our direct debit service, Xplor Debit Success, that transaction fees for processing payments will change, effective 1 January 2023.

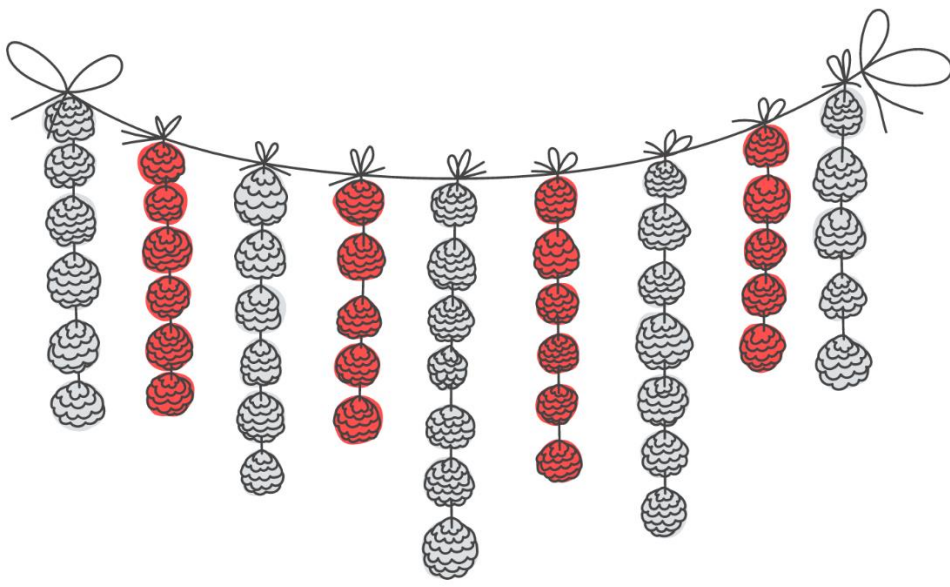
The new transaction fees for direct debits are listed below:

Bank Account : \$0.95

Credit Card (Visa/Mastercard): 2.47%

Amex: 4.53%

If you have any queries regarding this, please feel free to contact Lindsay or Admin.



Closure Dates

The closure dates for the upcoming Christmas/New Year period are Friday the 23rd of December to Tuesday the 10th of January. The last day of care for 2022 will be Thursday the 22nd of December and the first day of care for 2023 will be Wednesday the 11th of January. Admin will be open for calls as of Monday the 9th of January.



www.facebook.com/SubicareELC



www.instagram.com/subicareelc



www.subicare.com.au